

2011-2030 Comprehensive Regional Water Management Plan

Western Regional Water Commission

January 14, 2011

www.wrwc.us

WESTERN REGIONAL
WATER COMMISSION

Status Report

- Completed 30-day public inspection period
- Held a Public Workshop on Dec 14, 2010
- No comments received

Regional Water Plan

Executive Summary

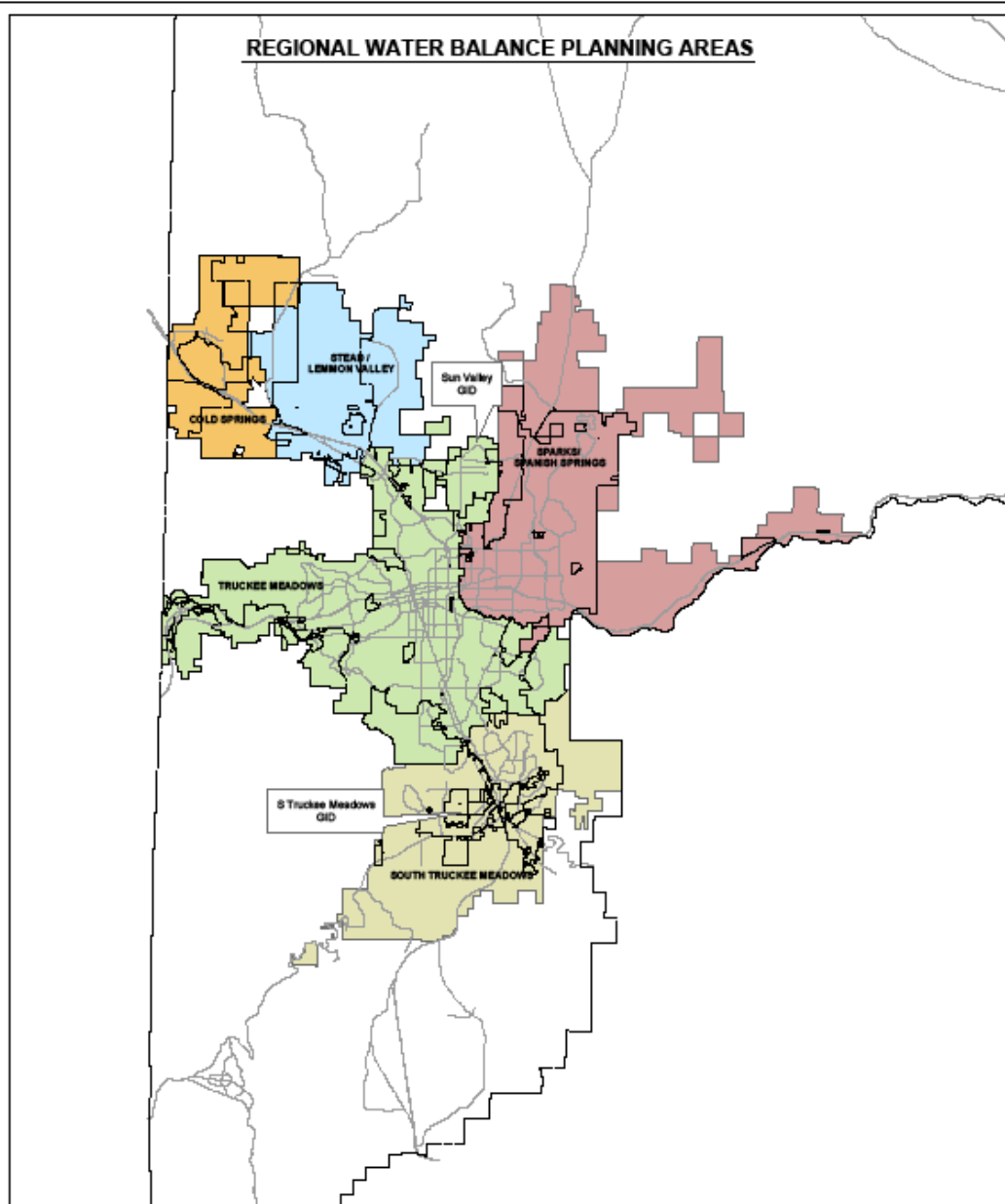
Introduction

1. Water Planning Policies and Criteria
2. Water Resources
3. Water Purveyors and other Water Providers
4. Wastewater and Watershed-Based Water Quality Planning
5. Flood Management and Storm Water Drainage

Regional Water Plan

6. Population Forecast and Projections of Water Demand, Peak Day Requirements and Wastewater Flow
 7. Water Conservation Plan – Efficient Use of Water
 8. Cost and Financing
 9. Issues and Action Plan
- Appendices

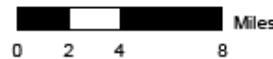
REGIONAL WATER BALANCE PLANNING AREAS



PLANNING AREAS

- COLD SPRINGS
- STEAD / LEMMON VALLEY
- TRUCKEE MEADOWS
- SOUTH TRUCKEE MEADOWS
- Washoe County
- City of Reno
- City of Sparks

Figure 6.1 REGIONAL WATER BALANCE PLANNING AREAS

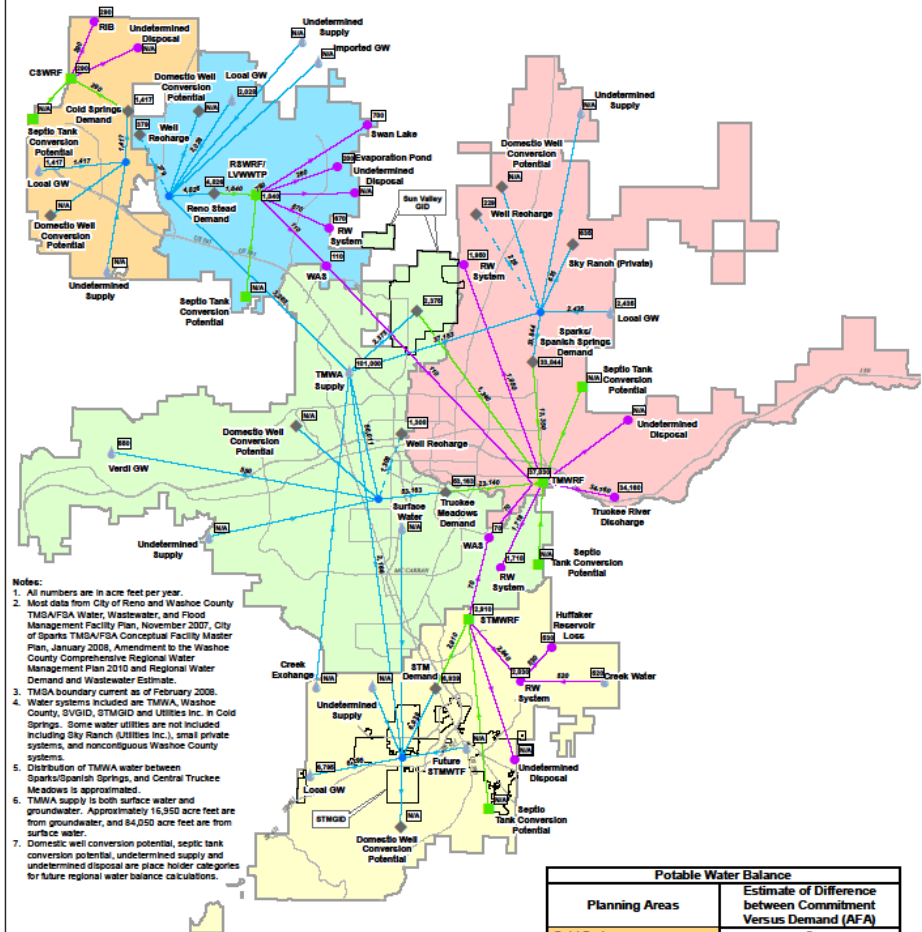


Notes: The shape and configuration of all delineated planning areas are approximate only and cannot be used as a guide for design or survey work. Reproduction is not permitted without prior written permission from the Washoe County Department of Water Resources. August 2010.

Department of Water Resources
Resource Planning & Management Division
 Washoe County
 Nevada



Figure 6-2 Existing Regional Water Balance



- Notes:
- All numbers are in acre feet per year.
 - Most data from City of Reno and Washoe County TMSA/FDA Water, Wastewater, and Flood Management Facility Plan, November 2007, City of Sparks TMSA/FDA Conceptual Facility Master Plan, January 2008, Amendment to the Washoe County Comprehensive Regional Water Management Plan 2010 and Regional Water Demand and Wastewater Estimate.
 - TMSA boundary current as of February 2008.
 - Water systems included are TMWA, Washoe County, SVGID, STMGID and Utilities Inc. in Cold Springs. Some water utilities are not included including Sky Ranch (Utilities Inc.), small private systems, and noncontiguous Washoe County systems.
 - Distribution of TMWA water between Sparks/Spanish Springs, and Central Truckee Meadows is approximated.
 - TMWA supply is both surface water and groundwater. Approximately 16,950 acre feet are from groundwater, and 84,050 acre feet are from surface water.
 - Domestic well conversion potential, septic tank conversion potential, undetermined supply and undetermined disposal are place holder categories for future regional water balance calculations.

Potable Water Balance	
Planning Areas	Estimate of Difference between Commitment Versus Demand (AFA)
Cold Springs	0
Reno Stead/Lemmon Valley	88
Sparks/Spanish Springs	5,545
Central Truckee Meadows	4,466
South Truckee Meadows	2,022
Wastewater Balance	
Wastewater Service Areas	Available Disposal Capacity (AFA)
CSWRF	1,060
RSWRFLVWWTP	1,480
TMWRF (RENO)	2,470
TMWRF (SPARKS)	
STMWRF	520

ECOLOGIC
 ENVIRONMENTAL SCIENCE & TECHNOLOGY
 10351 DOUGLAS BLVD. PHONE: 775.827.2311
 RENO, NV 89521 FAX: 775.827.2318

FIGURE 6.2
EXISTING REGIONAL WATER BALANCE
 COUNTY OF WASHOE, NEVADA

LEGEND:

SUPPLY	FLOW	GW RECHARGE	COLD SPRINGS
DEMAND	DISPOSAL	RECLAIMED	SPARKS/SPANISH SPRINGS
		WASTEWATER	RENO STEAD LEMMON VALLEY
		WATER	SOUTH TRUCKEE MEADOWS
		TMSA BOUNDARY	CENTRAL TRUCKEE MEADOWS

0 1 2 3
MILES

11/11/14

 Note: The scale and configuration of all information shown herein are approximate only and are not intended as a guide for design or survey work. Reproduction is not permitted without prior written permission from the Washoe County Department of Water Resources.
 November, 2010
Department of Water Resources
 Resource Planning & Management Division
 Washoe County, Nevada
 600 Douglas Way
 Reno, Nevada 89502 (775) 854-6000

WESTERN REGIONAL WATER COMMISSION

Regional Water Plan

7. Water Conservation Plan – Efficient Use of Water

8. Cost and Financing

9. Issues and Action Plan

Appendices

Questions?

www.nnwpc.us – documents

2011-2030

Comprehensive Regional Water Management Plan

www.wrwc.us

WESTERN REGIONAL
WATER COMMISSION